

B1: Biodiversity (Supplement to Gloucestershire NRN)

Ecosystem Service Definition

The ability of a habitat to support a diverse range of species, providing a variety of environmental, social, and economic benefits. These layers should be viewed in conjunction with the original Gloucestershire Nature Recovery Network.

Baseline Methods & Rationale

A relational dataset was produced to map the Biodiversity ecosystem service baseline within Gloucestershire. The modifier layer selected was the county’s Nature Recovery Network (GWT, 2020), with modifier values based on existing connectivity, as per Table B1.1. The rationale for using these modifier values was that areas better connected to core habitat are likely to provide the biodiversity ecosystem service to a greater degree.

Table B1.1: Multiplier values applied for intersecting and non-intersecting habitats

Existing Connectivity	Multiplier
Core	2.0
500m	1.4
Other	1.0

Opportunity Methods & Rationale

A relational dataset was also produced to map biodiversity ecosystem service opportunity, also using the Gloucestershire Nature Recovery Network as a modifier layer. The Nature Recovery Network includes an assessment of where change of habitat type would give the greatest benefit to biodiversity and was therefore considered an appropriate modifier layer. Modifier values were based on potential connectivity within the county, as defined by the Nature Recovery Network, and are presented in Table B1.2, below.

Table B1.2: Multiplier values applied for intersecting and non-intersecting habitats

Potential Connectivity	Multiplier
High	2.0
Medium	1.4
Low	1.2
Existing Priority Habitat	1.0

Limitations and Further Development

The Gloucestershire Nature Recovery Network is currently in development and these layers should be updated periodically as the Nature Recovery Network is updated.

The Gloucestershire Nature Recovery Network currently does not identify opportunities for enhancing the size of contiguous habitat which contribute to recovering ecological integrity across the county. This will require additional analysis that links natural capital and ecological integrity mapping.

References

Gloucestershire Wildlife Trust, 2020. Nature Recovery Network

Figure B1.1: Biodiversity Baseline (relational)

B1: Biodiversity (baseline)

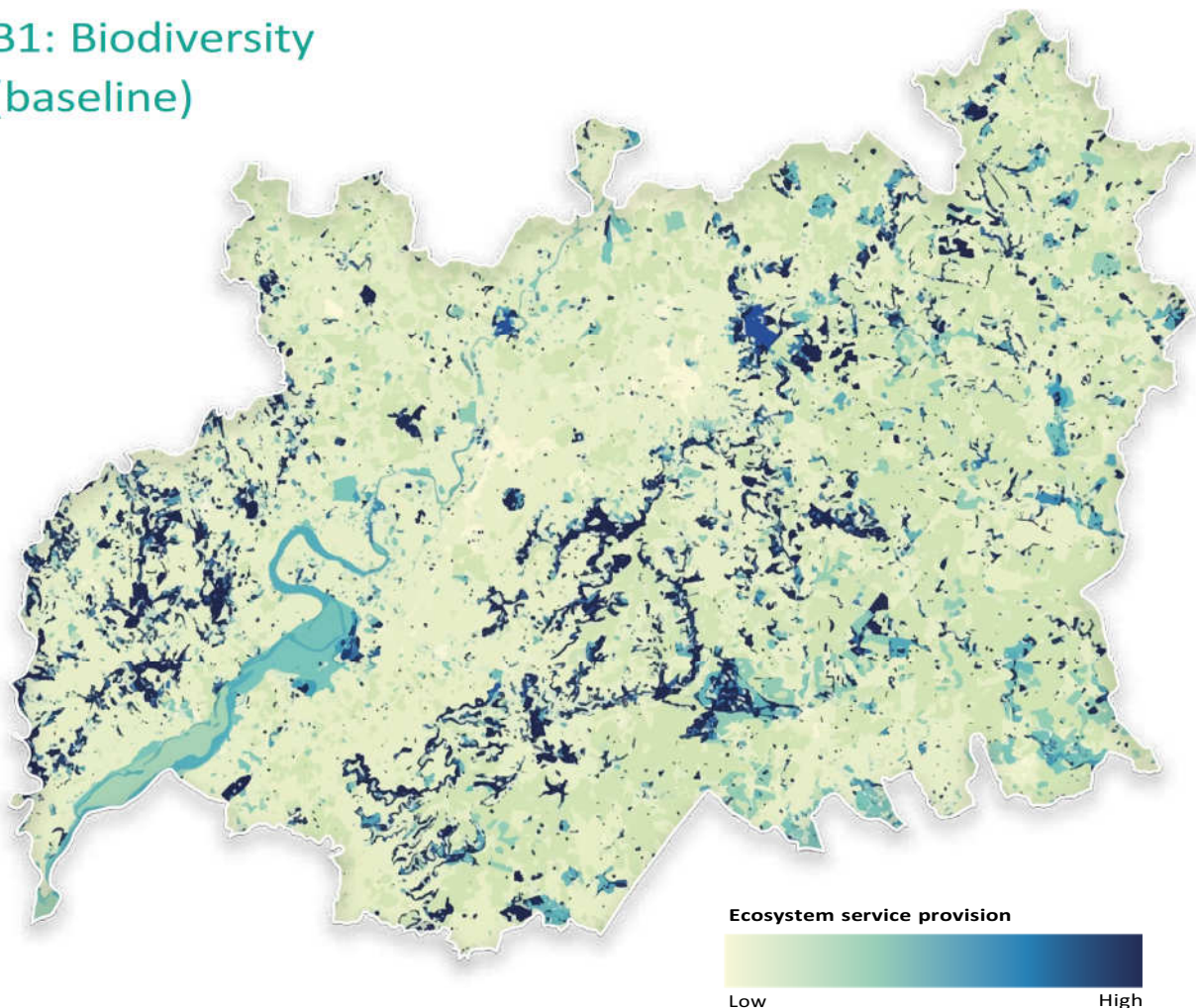


Figure B1.2: Biodiversity Opportunity (relational)

B1: Biodiversity (opportunity)

